



# Pediatric Renal Transplantation in Oman: A Single-center Experience

Mohamed S. Al Riyami<sup>1\*</sup>, Sulaiman Al Saidi<sup>1</sup>, Badria Al Ghaithi<sup>1</sup>, Anisa Al Maskari<sup>1</sup>, Sadiq Lala<sup>2</sup>, Nabil Mohsin<sup>3</sup>, Lekha Hirshikesan<sup>4</sup> and Naifain Al Kalbani<sup>1</sup>

<sup>1</sup>Pediatric Nephrology Unit, Department of Child Health, Royal Hospital, Muscat, Oman

<sup>2</sup>Urology Unit, Department of Surgery, Royal Hospital, Muscat, Oman

<sup>3</sup>Department of Medicine, College of Medicine, Sultan Qaboos University, Muscat, Oman

<sup>4</sup>Department of Nephrology Ananthapuri Hospitals and Research Institute, Thiruvananthapuram, Kerala, India

## ARTICLE INFO

### Article history:

Received: 1 June 2017

Accepted: 8 October 2017

### Online:

DOI 10.5001/omj.2018.03

### Keywords:

Renal Transplantation;  
Pediatrics; Living Donors;  
Oman.

## ABSTRACT

**Objectives:** This study sought to report 22 years experience in pediatric kidney transplantation in Oman. **Methods:** Electronic charts of all Omani children below 13 years of age who received a kidney transplant from January 1994 to December 2015 were reviewed. Data collected included patient demographics, etiology of end-stage kidney disease, modality and duration of dialysis, donor type, complication of kidney transplantation (including surgical complications, infections, graft rejection) graft and patient survival, and duration of follow-up. **Results:** During the study period transplantation from 27 living related donors (LRDs), 42 living unrelated donors (LURDs), also referred to as commercial transplant, and one deceased donor were performed. The median age at transplantation was nine years for both groups. The most common primary diagnosis was congenital anomalies of the kidney and urinary tract in 32.8% of patients followed by familial nephrotic syndrome in 20.0% and polycystic kidney disease in 18.5%. Almost half the patients were on hemodialysis before transplantation, 35.7% were on peritoneal dialysis, and 14.2% received preemptive renal transplantation. Children who received LURD kidneys had high surgical complications (42.8%) compared to the LRDs group (17.8%). Five patients from LURDs group had early graft nephrectomy and four patients developed non-graft function or delayed graft function. In addition, patients in the LURDs group had a higher incidence of hypertension and acute rejection. Graft and patient survival were both better in the LRDs than the LURDs group. **Conclusions:** Although our pediatric kidney transplant program is a young program it has had successful patient outcomes comparable to international programs. Our study provides evidence that in addition to legal and ethical issues with commercial transplant, it also carries significantly higher morbidity and reduced graft and patient survival.

Pediatric kidney transplantation is the best management modality for children with end-stage renal disease (ESRD). Transplantation carries more advantages compared to dialysis. Children with functioning kidney transplant have better development and growth and perform better at school compared to children on dialysis.<sup>1-3</sup> In developed countries, children with ESRD have higher rates of transplants from living related donors (LRD) and get priority in the allocation of deceased organ donation programs.<sup>4,5</sup> In countries that lack an established deceased donor transplantation program and/or unavailability of suitable donors, many ESRD patients remain on chronic dialysis or pursue commercial transplantation.<sup>6</sup>

Commercial kidney transplantation is still widely practiced despite efforts to discourage it.<sup>7,8</sup> It gives rise to many ethical dilemmas and puts both the recipient and donor at potential risk.<sup>9,10</sup> Many international bodies such as the World Health Organization (WHO) discourage commercial transplantation and transplant tourism.<sup>11</sup> The declaration of Istanbul on Organ Trafficking and Transplant Tourism stated that commercial transplant should be stopped because it is against the principles of justice and respect of humanity.<sup>12</sup>

A kidney transplantation program started in Oman in 1988 as a joint venture between Sultan Qaboos University and the Ministry of Health (MoH). It included both pediatric and adult

patients. Before 1988, donors and recipients were sent to Oxford University in the United Kingdom for kidney transplantation as part of an agreement between the MoH and Oxford University. In 1993, Omani transplantation legislation was established, according to which only living related donors (LRD) (by blood or marriage) were permitted. This law also allowed deceased donor transplantation and outlined the criteria for brain death in the country.<sup>13</sup> Omani legislation prohibits commercial transplantation. The first pediatric kidney transplantation to an Omani child was performed later that year. Our center is the only center to follow pediatric renal transplant patients in the country, with an active pediatric transplant program. Since 1970, Oman has greatly improved its health care system and is considered one of the leading countries in this field. However, medical tourism, including commercial transplantation, continues<sup>14</sup> despite active measures to prevent and to promote local organ donation and the establishment of a Kidney Donation Clinic.

This study aims to report 22 years experience in pediatric kidney transplantation in Oman. We included patients who received donation from a LRD or (commercial) donation from a living unrelated donor (LURD). There are limited studies about pediatric renal transplant outcome in the region. Our study sheds necessary light on long-term graft survival in populations with a high rate of consanguinity and many inherited genetic and metabolic etiologies for ESRD.

## METHODS

We conducted a retrospective study of all Omani children below 13 years of age who received a kidney transplant from January 1994 to December 2015. These patients received kidney transplant either in Oman or abroad then continued their follow-up at our center.

Our center is the only center providing pediatric renal transplant service in the country, which has an estimated population of 4.5 million. Since 2009, all pediatric LRD kidney transplantations were performed at our center. Before 2009, most ESRD patients who required kidney transplantation were sent abroad with their potential donors a part of an official cooperative program and only a few patients had kidney transplantation locally. Initially, a visiting transplant surgeon performed the surgery. Later, a

local surgical team was created. Currently, patients that require dual liver-kidney transplant are still being sent abroad as a liver transplant program is still in the process of establishment.

The immunosuppressive protocol consists of induction with intravenous methylprednisolone administered intraoperatively and a second dose after 24 hours, and two doses of basiliximab at day zero and day four. Maintenance immunosuppressant protocol includes tacrolimus, mycophenolate mofetil, and oral prednisolone according to tapering protocol. Prophylaxis with cotrimoxazole and nystatin are given for all patients for the first three months. Prophylaxis with oral valganciclovir is given for three months to high-risk recipients (i.e., seronegative recipient and seropositive donor).

Some patients with ESRD were taken by their parents abroad (despite extensive counseling) to receive commercial kidney transplantation. The majority of such patients returned a few days after the transplantation with no documentation regarding the donor, pre-transplant investigation (such as human leukocyte antigen (HLA) matching or viral serology of donor), transplant surgery, or hospital course. There was no communication between the commercial transplantation centers and our program.

Patients were divided into two groups; LRD and LURD. One patient received a kidney from a deceased donor and was included in the LRD group.

Data were collected from patients' electronic charts (Al Shifa system), a secure computer program which is used in our center to document patient history, examination, investigation, and treatment received during all hospital visits including emergency room visit, outpatient's clinic visit, and inpatient admissions.

Data collected included patient demographics, ESRD etiology, modality and duration of dialysis, donor type, complication of kidney transplantation (including surgical complications, documented infections, graft rejection), graft and patient survival, and duration of follow-up. The study was approved by the Royal Hospital Ethical Committee.

Information about graft survival at one, three, and five years were obtained. Estimated glomerular filtration rate (GFR) was calculated at one, three, and five years using the Schwartz equation.<sup>15</sup> Patient survival at five years was calculated for both groups.

Hypertension was defined according to the fourth report on diagnosis, evaluation, and treatment of high

**Table 1:** Patient demographics.

	LRD, (n = 28)*	LURD, (n = 42)	Total, n (%)
<b>Age at transplant, years</b>			
< 2	2	0	2 (2.8)
2–5	6	9	15 (21.4)
> 5	19	33	52(74.2)
Median age, years	9	9	
Female/male	12/16	19/23	44.2/55.7
<b>Cause of ESRD</b>			
CAKUT	9	14	23 (32.8)
Familial NS	5	9	14 (20.0)
PKD	9	4	13 (18.5)
Chronic GN	1	9	10 (14.2)
Other	4	2	6 (8.5)
Unknown	0	4	4 (5.7)
<b>Dialysis</b>			
Peritoneal	10	15	25 (35.7)
Hemodialysis	10	25	35 (50.0)
Preemptive	8	2	10 (14.2)
<b>HLA matching preformed/unknown</b>	23/5*	16/26	55.7/44.2
<b>Induction</b>			
IL2- RB	18	11	29 (41.4)
ATG	2	2	4 (5.7)
Unknown	8	29	37 (52.8)
<b>Initial immunosuppressive</b>			
CPAZ	1	8	9 (12.8)
CPM	4	24	28 (40.0)
TPM	21	8	29 (41.4)
Unknown	2	2	4 (5.7)

\*including one patient that received a renal transplant from a deceased donor. LRD: living related donor; LURD: living unrelated donor; ESRD: end-stage renal disease; CAKUT: congenital anomalies of kidney and urinary tract; NS: nephrotic syndrome; GN: glomerulonephritis; PKD: polycystic kidney disease; HLA: human leukocyte antigen; IL2-RB: interleukin receptor blocker; ATG: anti-thymocyte globulin; CPAZ: cyclosporine, prednisolone and azathioprine; CPM: cyclosporine, prednisolone and mycophenolate; TPM: tacrolimus, prednisolone and mycophenolate.

blood pressure in children and adolescents (2004).<sup>16</sup> The initial agent for management of hypertension in our patients was amlodipine; other agents such as beta blockers were added if blood pressure was not well controlled.

Delayed graft function was defined as the need for dialysis in the first week post-transplant and improvement of graft function with time. Primary non-function was defined as the requirement for dialysis in the first week post-transplant without further improvement of graft function. Early nephrectomy was defined as the need for graft nephrectomy in first six months post-transplant. Graft failure was defined as a return to dialysis, need

for second kidney transplantation, or death with a functioning graft.

Rejection was diagnosed by allograft biopsy when patients presented with acute deterioration of allograft function. Histopathology findings were graded according to Banff classification.<sup>17</sup> Protocol biopsies are not practiced in our center.

Patient data were collected in SPSS Statistics (IBM SPSS Statistics for Windows. IBM Corp. Released 2011. Version 20.0. Armonk, New York, USA). Comparisons between groups were made by *t*-test or chi-square test, as appropriate. The level of statistical significance was set at  $p < 0.050$ . Kaplan Meir survival curve was used to compare the graft and patient survival between the study groups.

## RESULTS

Over 22 years our center followed 70 primary renal transplant recipients. Thirty-nine patients (55.7%) were male. The median age at transplantation was nine years. Twenty-seven patients (38.5%) received LRD transplants, 64.2% of these were performed locally. Countries in which LRD was performed for Omani children were the United Kingdom (n = 3), India (n = 5) and Saudi Arabia (n = 1) [Table 1].

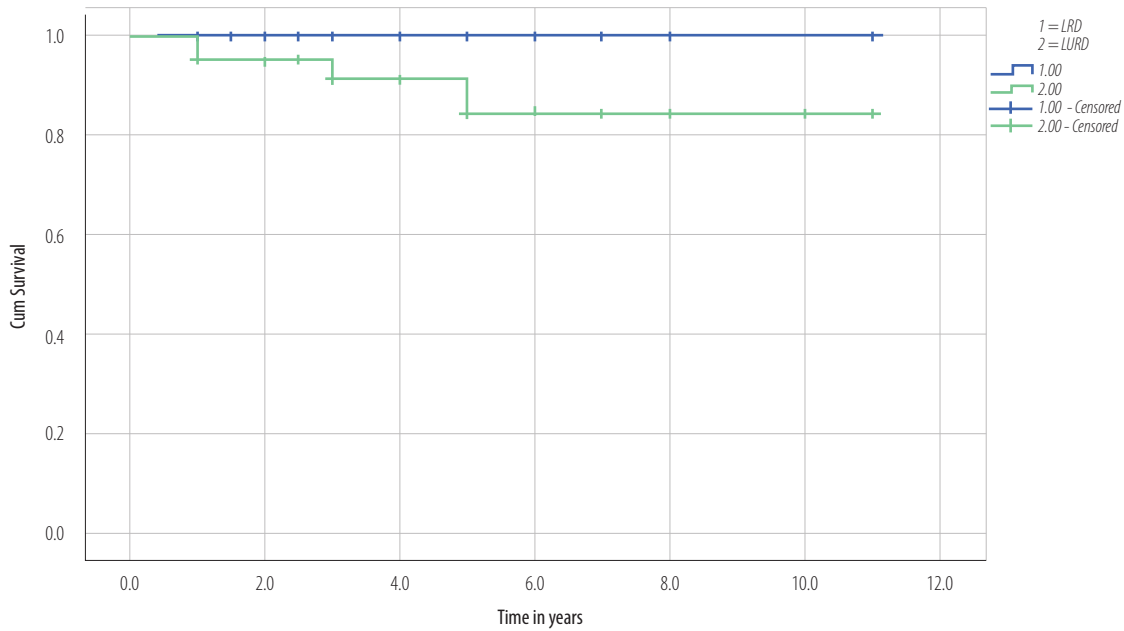
Almost half the LRDs were mothers (48.0%), followed by fathers (19.0%), aunts (15.0%), uncles (11.0%), and adult siblings (7.0%).

Three children received a dual liver and kidney transplant from a living relative (two siblings with primary hyperoxaluria type 1 and one patient with autosomal recessive polycystic kidney disease).

One patient received a deceased donor transplantation performed locally in 1994. The recipient was 17 months old with Denys-Drash syndrome, and the kidney was retrieved from a preterm baby with brain death. The patient had good graft function for 20 years after which he developed chronic allograft nephropathy and has required hemodialysis since 2016.

Forty-two patients (60.0%) received LURD transplants in various countries: Pakistan (n = 34), China (n = 5), Iran (n = 2) and India (n = 1).

The most common primary diagnosis for patients who received kidney transplantation were congenital anomalies of the kidney and urinary tract (CAKUT) in 32.8% of patients followed by familial nephrotic syndrome (20.0%), and polycystic kidney

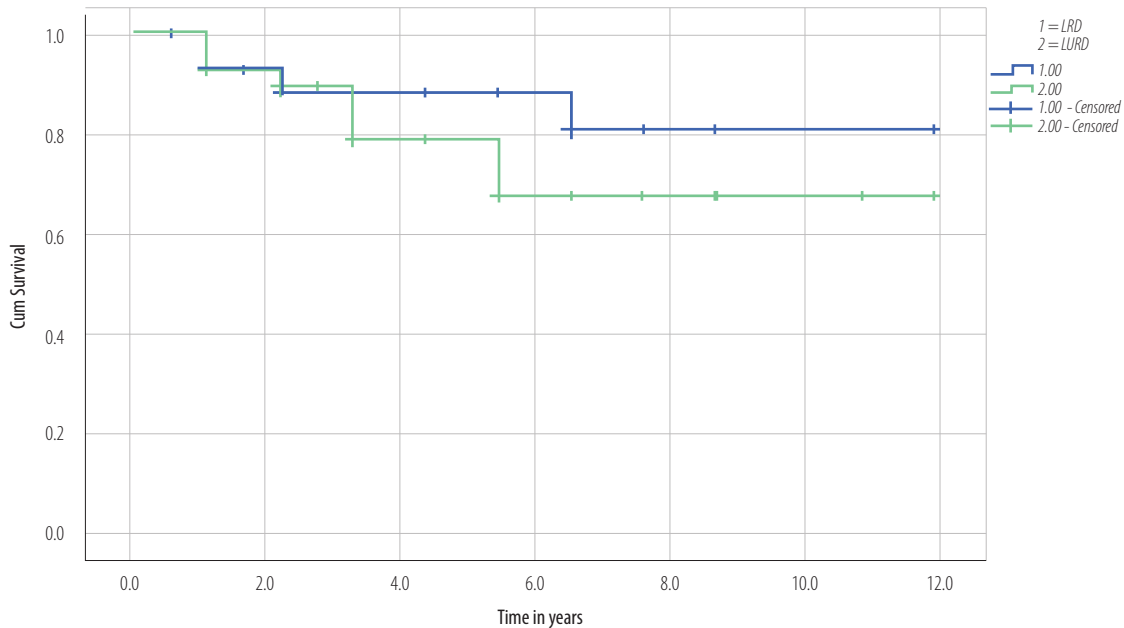


**Figure 1:** Kaplan-Meier survival curve demonstrates lower living unrelated donor (LURD) patient survival compared with living related donor (LRD) patients, but this was not statistically significant ( $p$ -value = 0.138).

disease (18.5%). Fifty percent of patients were on hemodialysis before transplantation, 35.7% were on peritoneal dialysis, and 14.2% received preemptive renal transplantation [Table 1].

HLA A, B, DR alleles were available for 82.1% ( $n = 23$ ) of LRD patients, 73.9% ( $n = 17$ ) had

three matches (haplotype), 13.0% ( $n = 3$ ) had four matches, 8.6% ( $n = 2$ ) had six matches, and 4.3% ( $n = 1$ ) had one match. HLA were available for only 38.0% ( $n = 16$ ) of the LURD transplant patients, 87.5% ( $n = 14$ ) had three matches, one patient had four, and the other had two matches.



**Figure 2:** Kaplan-Meier survival curve demonstrates lower living unrelated donor (LURD) graft survival compared with living related donor (LRD) patients, but this was not statistically significant ( $p$ -value = 0.797).

**Table 2: Kidney transplant complications.**

	LRD, (n = 28)	LURD, (n = 42)	p-value
Primary non-function	0	2 (4.7)	0.301
Delayed graft function	0	2 (4.7)	0.301
Surgical complication	5 (17.8)	18 (42.8)	0.005
RAS	1 (3.5)	4 (9.5)	0.440
Wound infection	0	3 (7.1)	0.540
Obstruction/leaks	0	5 (11.9)	0.095
Recurrent UTI	4 (14.2)	5 (11.9)	0.356
Deep vein thrombosis	0	1 (2.3)	0.468
Viral infection	16 (57.1)	19 (45.2)	0.747
CMV	4 (14.2)	7 (16.6)	0.111
EBV	1 (3.5)	1 (2.3)	0.723
BKV	4 (14.2)	5 (11.9)	0.542
Warts virus	3 (10.7)	3 (7.1)	0.523
Hepatitis C virus	0	2 (4.7)	0.124
Herpes virus	4 (14.2)	1 (2.3)	0.054
Fungal infection	0	3 (7.1)	0.202
Early nephrectomy	0	5 (11.9)	0.230
Malignancy	1 (3.5)	2 (4.7)	0.896
Hypertension	15 (53.3)	31 (73.8)	0.147
Acute rejection	5 (17.8)	9 (21.4)	0.747

Data presented as n (%).

LRD: living related donor; LURD: living unrelated donor; RAS: renal artery stenosis; UTI: urinary tract infection; CMV: cytomegalovirus; EBV: Epstein-Barr virus; BKV: BK virus.

Sixty-four percent of our LRD transplantation patients received IL2-R blocker as induction agents compared to only 26.1% of LURD transplant patients. Triple therapy with prednisolone, tacrolimus, and mycophenolate is the initial therapy for 75.0% of our LRD transplantation compared to 57.1% of LURD transplant patients who were on cyclosporine along with prednisolone and mycophenolate as initial therapy. Most LURD transplant who were initially on cyclosporine or azathioprine were changed to tacrolimus and/or mycophenolate immediately after arrival at our center. Tacrolimus blood level was maintained at 4–6 mcg/L beyond six months of transplantation for all patients with the aim of keeping tacrolimus levels in the lower target range in LRD patients. Most LRD transplant patients were able to taper prednisolone to 2.5–5 mg on alternate days, but no patients from the LURD group were able to do this [Table 1].

Children who received LURD kidney transplant had high surgical complications at 42.8% compared to 17.8% for LRD recipients ( $p$ -value = 0.005). Five patients from the LURD group had early graft nephrectomy; two had hyperacute rejection and two developed invasive fungal infections. One patient lost her graft due to severe bleeding secondary to rupture of graft arterial anastomosis during balloon angioplasty for severe renal artery stenosis (RAS). In contrast, no patient had early nephrectomy from the LRD group. Four patients from LURD group developed non-graft function or delayed graft function [Table 2].

Three patients from LURD group developed invasive fungal infection [Table 2]. Two developed persistent fever, graft dysfunction, and rapidly progressed to graft infarction. Graft biopsies of the first patient showed invasive aspergillosis and for the second showed mucormycosis. The third child presented with aspergillosis wound infection, which was treated by wound exploration, debridement, and antifungal medication.

Viral infections were seen in 57.1% of LRD patients and 45.2% of LURD patients. The rate of hypertension was higher in the LURD group at 73.8% compared to 53.5% in the LRD group. Acute rejection developed in 21.4% in the LURD and 17.8% in the LRD group [Table 2].

Four patients from LURD group died during the first five years post-transplantation. Two patients died with sepsis, one after treatment for acute rejection, and the second during treatment for post-transplant lymphoproliferative disorder. The other two patients died after transplant graft failure secondary to chronic allograft nephropathy. No patients from the LRD group died during the follow-up period. Five-year patient survival for patients who received LRD transplant and patients who received LURD transplant were 100% and 84.0%, respectively [Figure 1].

Four patients from the LRD group lost their graft, one six months after transplant due to recurrence of primary hyperoxaluria, the second lost her graft two years post-transplant secondary to acute rejection. One child lost her graft because of polyoma (BK) nephropathy and the other secondary to chronic allograft nephropathy. Graft survival at one, three, and five years for patients in the LRD group were 96.0%, 90.0%, and 78.0%, respectively [Figure 2].

Eight patients from the LURD group lost their graft during the follow-up period; five had graft nephrectomy as mentioned above. Two patients lost their graft secondary to chronic allograft nephropathy, and one child with neurogenic bladder lost her graft secondary to recurrent pyelonephritis. Two patients died with a functioning graft. Graft survival at one, three, and five years post-transplant were 86.0%, 79.0% and 65.0%, respectively [Figure 2].

## DISCUSSION

This 22-year retrospective review of a single center included 70 patients who received kidney transplantation and showed comparable outcomes to recently published data.

Males comprised 55.7% of patients, and 74.2% were above the age of five years at the time of transplant. A recent report of the North American Pediatric Renal Trial and Collaborative Studies (NAPRTCS) showed that most children who received kidney transplantation were between 13 and 17 years old (39.2%) followed by 6- to 12-year-olds (32.8%), and children under the age of five (20.0%).<sup>18</sup>

In our study, the most common primary diagnoses for patients who received kidney transplantation were CAKUT, which were found in 32.8% of patients followed by familial nephrotic syndrome in 20.0% and polycystic kidney disease in 18.5%. In a retrospective study from Jordan, which included 71 children, 84% had kidney transplants from a LRD. The most common cause of ESRD was CAKUT followed by focal segmental glomerulosclerosis (FSGS).<sup>19</sup> Published studies in the region,<sup>19,20</sup> including our study, are comparable to the NAPRTCS data which showed the most common cause of ESRD is renal hypodysplasia/dysplasia and obstructive uropathy in about 30% of patients followed by FSGS.<sup>18</sup> The high rate of hereditary renal disease in our cohort is related to increased consanguineous marriage in the population, similar to other reports from the Middle East.<sup>21</sup>

Half the patients in our cohort were on hemodialysis before transplantation, one-third was on peritoneal dialysis, and the remaining received preemptive kidney transplantation. The high proportion of patients who were on hemodialysis is explained by the fact that hemodialysis was the main dialysis modality practiced in our center in the

past. Few patients were on continuous ambulatory peritoneal dialysis. The automated peritoneal dialysis (APD) program was established later. Currently, most children who have ESRD at our center are on APD, and only a few are on hemodialysis.

The number of patients who received commercial kidney transplantation abroad is higher than those who received LRD transplantation. This was due to the unavailability of an active LRD kidney transplantation program for children locally before 2009. In addition, there were no suitable donors available for many patients due to ABO incompatibility or because parents had other comorbid conditions such as hypertension, diabetes, or obesity.

One- and three-year graft survival for patients who received LRD kidneys were 96.0% and 90.0%, respectively, which is comparable to international data.<sup>18</sup> Our five-year survival was 78.0% compared to 80% in a study from Jordan,<sup>18</sup> and 81% in a report from Iran.<sup>20</sup> In the NAPRTCS, five-year graft survival was reported as 84%.<sup>18</sup> Five-year patient survival was excellent at 100% compared to 95.9% in the ESPN/ERA-EDTA registry<sup>22</sup> and 92.7% in Japan.<sup>23</sup> Acute allograft rejection occurred in 19% of recipients of LRD kidneys over the follow-up period. The cumulative acute rejection rate in one year in recent NAPRTCS data was 15% (5% of patients lost their grafts because of acute rejection). A recent report from Japan that involved 111 children (92 LRD) showed that the overall rate of acute rejection was 43.2%.<sup>23</sup>

In our study, viral infections were documented in 57.1% of LRD patients, higher compared to the LURD group. However, cytomegalovirus (CMV) and hepatitis C were more common in the LURD group. This could partly be explained by increased surveillance for viral infections in LRD patients and under-reporting of other mild viral infection such as warts and herpes gingiva-stomatitis infection in the LURD group.

Hypertension was a common complication in both groups, but recipients of LURD kidneys had a higher rate of hypertension at 73.8% compared to children who received a LRD kidney (53.5%). A possible explanation for this difference is that recipients of LURD kidneys received a higher dose of prednisolone during induction and remained on higher doses of prednisolone during follow-up compared to LRD recipients. In addition, four

recipients of LURD kidneys developed significant RAS compared to only one LRD kidney recipient. Hypertension is common after kidney transplantation for both adults and children.<sup>18,24</sup> Data from the 10<sup>th</sup> NAPRTCS annual report showed that 78% of recipients of LRD kidneys were hypertensive in the immediate post-transplant period, which decreased to 64% at two years' post-transplant.<sup>24</sup>

There have been several studies that addressed the medical and surgical issues regarding commercial kidney transplantation; some showed poor patient and graft survival, whereas others found comparable outcomes.<sup>25-34</sup> In a study conducted in Dubai, 45 children who had kidney transplantation abroad were followed and compared to a matched group of LRD kidney recipients from the Collaborative Transplant Study. The LURD group had lower one- and ten-year graft survival than the LRD group (87.8% and 43.4% vs. 100%). Viral infections (CMV, EBV, VZV) were four-times more common in the LURD group.<sup>25</sup> Another study in Saudi Arabia, which included 165 adults, showed that patients who had transplants abroad had a significantly higher rate of acute rejection in the first year compared to patients who had local kidney transplantation (27.9% vs. 9.9%,  $p = 0.005$ ), significantly higher mean serum creatinine at six months and one year and a higher rate of CMV and hepatitis C infection. However, there was no significant difference in graft and patient survival at one or two years after transplantation.<sup>26</sup> In another study from Korea, 87 adult patients who received kidney transplantation abroad were compared to patients who had transplants locally. Patients who had transplants abroad had a significantly higher rate of biopsy-proven acute rejection, infections, and hospitalizations. Patient survival rate, however, was similar in both groups. These findings persisted even after matching the patients who received overseas transplantation to a similar number of patients who had transplantation locally.<sup>27</sup> Our study confirmed the findings of the above studies regarding potential risks of commercial kidney transplantation.

Commercial kidney transplantation has its ethical issues and predisposes patients to major complications. People should be educated about the medical and surgical risks of such surgery and the benefits of LRD kidney transplantation to discourage commercial kidney transplantation. Efforts should be directed to increase the awareness of the ethical issues and potential risks to the

donors and recipients of commercial kidneys. In countries where there is commercial kidney transplantation, policies should be implemented to prohibit it. We fully support the international efforts to ban such transplantation.

In Oman, establishing programs to increase organ supply like cadaveric transplantation program, paired exchange, desensitization, and ABO-incompatible transplantation will increase the domestic supply of organs and prevent people from seeking commercial transplantation.

## CONCLUSION

Our pediatric kidney transplant program, although a young program, has had successful patient outcomes comparable to international programs. However, many of our patients obtained commercial kidney transplantation abroad despite the efforts to discourage such transplantation. These patients had higher morbidity rates and worse outcomes. Efforts should be undertaken to educate people about the ethical and medical issues of commercial kidney transplantation, and legislation should be put in place to prohibit it. Establishing transplantation programs that increase the supply of organs is essential to discourage people from obtaining kidney transplantation abroad.

### Disclosure

The authors declared no conflict of interest. No funding was received for this study.

### REFERENCES

1. Fine RN. Growth following solid-organ transplantation. *Pediatr Transplant* 2002 Feb;6(1):47-52.
2. Fennell EB, Fennell RS, Mings E, Morris MK. The effects of various modes of therapy for end stage renal disease on cognitive performance in a pediatric population—a preliminary report. *Int J Pediatr Nephrol* 1986 Apr-Jun;7(2):107-112.
3. McDonald SP, Craig JC; Australian and New Zealand Paediatric Nephrology Association. Long-term survival of children with end-stage renal disease. *N Engl J Med* 2004 Jun;350(26):2654-2662.
4. Gritsch HA, Veale JL, Leichtman AB, Guidinger MK, Magee JC, McDonald RA, et al. Should pediatric patients wait for HLA-DR-matched renal transplants? *Am J Transplant* 2008 Oct;8(10):2056-2061.
5. Moudgil A, Dharnidharka VR, Lamb KE, Meier-Kriesche HU. Best allograft survival from share-35 kidney donors occurs in middle-aged adults and young children—an analysis of OPTN data. *Transplantation* 2013 Jan;95(2):319-325.
6. Elli M, Valeri M, Pisani F, Tisone G, Utzeri G, De Paolis P, et al. Developing countries as the major future source of living donor renal transplants. *Transplant Proc* 1992 Oct;24(5):2110-2111.

7. Babik JM, Chin-Hong P. Transplant tourism: understanding the risks. *Curr Infect Dis Rep* 2015 Apr;17(4):473.
8. Cohen DJ. Transplant tourism: a growing phenomenon. *Nat Clin Pract Nephrol* 2009 Mar;5(3):128-129.
9. Champan JR. The consequences of Successful transplantation. *Lancet* 2011 Oct;378(9800):1357-1359.
10. Jafar TH. Organ trafficking: global solutions for a global problem. *Am J Kidney Dis* 2009 Dec;54(6):1145-1157.
11. World Health Assembly. Fifty-seventh World Health Assembly WHA57.18: human organ and tissue transplantation. WHO [cited 2017 December]. Available from: [http://apps.who.int/gb/ebwha/pdf\\_files/WHA57/A57\\_R18-en.pdf](http://apps.who.int/gb/ebwha/pdf_files/WHA57/A57_R18-en.pdf).
12. Steering Committee of the Istanbul Summit. Organ trafficking and transplant tourism and commercialism: the Declaration of Istanbul. *Lancet* 2008 Jul;372(9632):5-6.
13. World Health Organization. Regional consultation on cell, tissue and organ transplantation. Karachi, Pakistan; 2005. p. 26-28.
14. Samir N, Karim S. An insight: medical tourism, local and international perspective. *Oman Med J* 2011 Jul;26(4):215-218.
15. Schwartz GJ, Furth SL. Glomerular filtration rate measurement and estimation in chronic kidney disease. *Pediatr Nephrol* 2007 Nov;22(11):1839-1848.
16. National high blood pressure education program working group on high blood pressure in children and adolescents. The fourth report on the diagnosis, evaluation and treatment of high blood pressure in children and adolescents. *Pediatrics* 2004;114(S2):555-576.
17. Racusen LC, Solez K, Colvin RB, Bonsib SM, Castro MC, Cavallo T, et al. The Banff 97 working classification of renal allograft pathology. *Kidney Int* 1999 Feb;55(2):713-723.
18. Smith JM, Martz K, Blydt-Hansen TD. Pediatric kidney transplant practice patterns and outcome benchmarks, 1987-2010: a report of North American Pediatric Renal Trial and Collaborative Studies. *Pediatric Transplant* 2013 Mar;17(2):149-157.
19. Issa H, Reham Al Mardini, Ghazi S. Pediatric Renal Transplant: Jordan's experience. *Saudi J Kidney Dis Transp* 2013;24(1):157-161.
20. Naderi G, Latif A, Karimi S, Tabassomi F, Esfahani ST. The long-term outcome of pediatric kidney transplantation in Iran: Result of a 25-years single-center cohort study. *Int J Organ Transplant Med* 2017;8(2):85-96.
21. Al-Eisa A, Naseef M, Al-Hamad N, Pinto R, Al-Shimeri N, Tahmaz M. Chronic renal failure in Kuwaiti children: an eight-year experience. *Pediatr Nephrol* 2005 Dec;20(12):1781-1785.
22. Lidwien A, Tjadan, Marles Noordzij. Racial disparities in access to and outcome of kidney transplantation in children, adolescents, and young adult: result from ESPN/ERA-EDTA Registry. *Am J Kidney Dis* 2016;67:293-301.
23. Yamada A, Tashiro A, Hiraiwa T, Kormatsu T, Kinukawa T, Ueda N. Long-term outcome of pediatric renal transplantation: a single center study in Japan. *Pediatric Transplant* 2014;18(5):453-462.
24. Kasiske BL, Anjum S, Shah R, Skogen J, Kandaswamy C, Danielson B, et al. Hypertension after kidney transplantation. *Am J Kidney Dis* 2004 Jun;43(6):1071-1081.
25. Maj A. Al Khalidi, Ahmed BQ, Opelz G, Schaefer F. Outcome of kidney transplant tourism in children: a single center experience. *Pediatr Nephrol* 2010;25:155-159.
26. Alghamdi SA, Nabi ZG, Alkhafaji DM, Askandrani SA, Abdelsalam MS, Shukri MM, et al. Transplant tourism outcome: a single center experience. *Transplantation* 2010 Jul;90(2):184-188.
27. Cha RH, Kim YC, Oh YJ, Lee JH, Seong EY, Kim DK, et al. Long-term outcomes of kidney allografts obtained by transplant tourism: observations from a single center in Korea. *Nephrology (Carlton)* 2011 Sep;16(7):672-679.
28. Gill J, Madhira BR, Gjertson D, Lipshutz G, Cecka JM, Pham PT, et al. Transplant tourism in the United States: a single-center experience. *Clin J Am Soc Nephrol* 2008 Nov;3(6):1820-1828.
29. Prasad GV, Shukla A, Huang M, D'A Honey RJ, Zaltzman JS. Outcomes of commercial renal transplantation: a Canadian experience. *Transplantation* 2006 Nov;82(9):1130-1135.
30. Canales MT, Kasiske BL, Rosenberg ME. Transplant tourism: Outcomes of United States residents who undergo kidney transplantation overseas. *Transplantation* 2006 Dec;82(12):1658-1661.
31. Kennedy SE, Shen Y, Charlesworth JA, Mackie JD, Mahony JD, Kelly JJ, et al. Outcome of overseas commercial kidney transplantation: an Australian perspective. *Med J Aust* 2005 Mar;182(5):224-227.
32. Sever MS, Kazancıoğlu R, Yildiz A, Türkmen A, Ecker T, Kayacan SM, et al. Outcome of living unrelated (commercial) renal transplantation. *Kidney Int* 2001 Oct;60(4):1477-1483.
33. Ben Hamida F, Ben Abdallah T, Goucha R, Hedri H, Helal I, Karoui C, et al. Outcome of living unrelated (commercial) renal transplantation: report of 20 cases. *Transplant Proc* 2001 Aug;33(5):2660-2661.
34. Mansy H, Khalil A, Aly TF, Filobos P, al-Dusari S, al-Shareef Z, et al. Outcome of commercial renal transplantation: two years follow-up. *Nephron* 1996;74(3):613-616.